

QUICKSILVER
ACTIV

645 CRUISER



SPECIFICATIONS

| | |
|-------------------------------|------|
| • Length Overall (M) | 6.33 |
| • Length of hull (M) | 6.12 |
| • Beam Maximum (M) | 2.39 |
| • Height - Without Canvas (M) | 1.79 |
| • Dry Weight (Kg) | 1060 |
| • Fuel Capacity (L) | 160 |

| | |
|---|---------|
| • Water Capacity (L) | 45* |
| • CE Design Category | C |
| • Maximum Number of People | 7 |
| • Maximum Power (HP / KW) | 200/147 |
| • OB Shaft Length | XL |
| • Deadrise (deg) | 20 |
| • Max. Load (People, Gear, Engine) (kg) | 845 |

* included with Smart Edition

STANDARD EQUIPEMENT

| | | | |
|-------------------------------------|---|-------------------------------|-------------------------------|
| • Bow Roller | • Pilot Seat with Flip Bolster and Swivel | • 12v electrical socket | • Aft Seat extension U-Lounge |
| • Anchor Locker | • Swim Platform | • 2 berths | • Opening deck hatch |
| • Self Bailing Cockpit | • Swim Ladder | • Laminated teak Flooring | • Hydraulic steering |
| • Navigation Lights | • Cockpit cushions | • Real Teak Cockpit Table | • OB Pre-Rigging |
| • SmartCraft Speedometer/Tachometer | • Cabin lights | • Cockpit Sun lounge Cushions | • Single Battery System |
| • Co-pilot Seat | • Cabin Cushions | • Aft Bench Seat | • Starboard Windscreen Wiper |

PACKS & OPTIONAL EQUIPMENT

SMART Edition

- Forward sun lounge
- Stereo Fusion with 2 speakers
- Cockpit shower
- Bimini with Enclosed Canvas
- Ski Pole
- 12v Cool Box

Optional Equipment

- Flexiteek Flooring
- Sea toilet
- Bimini
- Bimini with Enclosed Canvas
- Cockpit shower
- 12v cool box
- Mooring Cover
- Bow Electrical windlass

- Active Trim
- VesselView Link
- Ski pole
- Hull color
- Forward sun lounge
- Stereo Fusion with 2 speakers
- GPS/Chart Plotter 7" Simrad NSS evo3
- Mooring kit

MERCURY ENGINE OFFERING

150 HP 4-Stroke EFI

175 HP Verado

200 HP Verado

For more information, please to visit our Quicksilver website www.quicksilver-boats.com

As a company committed to continuous product improvement specifications are subject to change.

Modified by SPE 09/10/2017 - Product sheet MY2018: 1 Sept 2017 - 30 Aug 2018

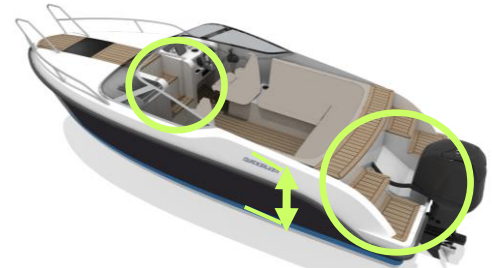


The Quicksilver 645 Cruiser, voted Motor Boat of the Year 2012, excelling in intelligent design, attention to detail, versatile usage, easy convertibility to sun lounge and dining area.

UNCOMPROMISED SECURITY ON BOARD

- Safe and comfortable manoeuvring in the bow & cockpit area thanks to spacious design. High free boards offer optimal safety for kids and adults.
- Anti-slip and easy access to and out of the water via the stern side of the boat in 3 steps.
- Easy access from cockpit to bow via wide steps.
- Convenient placed handgrips throughout the boat ensure stability and extra safety when moving around the boat.

FEATURES & BENEFITS



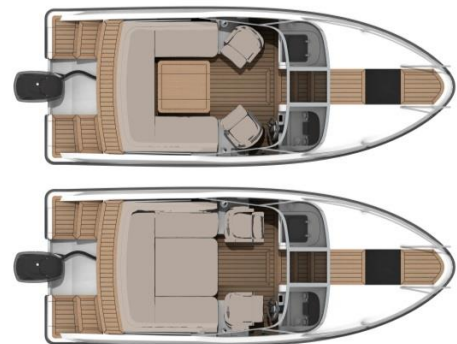
COMFORTABLE CABIN

- Easy cabin access via a folding cabin door.
- Plenty of lighting and ventilation is guaranteed through the large foredeck hatch deck.
- Ample storage possibilities below berth helps keep everything neat and tidy
- The double berth is equipped with cabin cushions and light and allows you and your family to relax and rest comfortably.



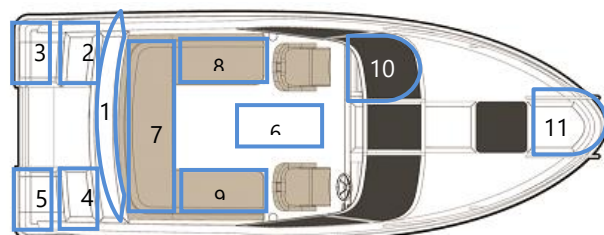
VERSATILE COCKPIT

- Spacious and flexible cockpit with U-seating that can be converted to dining area and large sun lounge.
- The real teak dining table is easy to deploy and can easily be stored in a dedicated storage area below the deck. By pivoting the driver and co-driver seat you can easily sit 6 people at the dining table.
- A 12v cool box assures chilled food and drinks are always on hand even on the longest, warmest days
- Integrated floor draining will ensure the cockpit stays dry.



INTELLIGENT STORAGE SOLUTIONS

- 1.- Integrated storage solution for the enclosed canvas and navigation lights underneath the top step at the rear of the boat.
- 2.3.4.5.- Storage compartments underneath the steps over the transom area to store the anchor, mooring equipment such as fender and ropes and an integrated swim ladder.
- 6.- Integrated floor storage for the optional 12v cool box and cockpit table
- 7.8.9.- Underneath the cockpit seats you will find storage for the ski pole and ample of space to store away water ski equipment and accessories
- 10.- Glove box
- 11.- Additional mooring/anchor locker



For more information, please to visit our Quicksilver website www.quicksilver-boats.com

As a company committed to continuous product improvement specifications are subject to change.

Modified by SPE 09/10/2017 - Product sheet MY2018: 1 Sept 2017 - 30 Aug 2018