



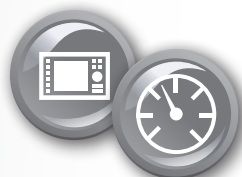
MERCURY
Precision Rigging

Mercury NMEA 2000 Gateway

SMARTCRAFT



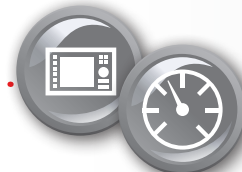
ENGINES
Outboards & Sterndrives



DISPLAYS & GAUGES



NMEA 2000



DISPLAYS & GAUGES
NMEA 2000
Compatible



SYSTEMS
Trim Tabs
Depth Sounders



NAVIGATION
Chart Plotters
GPS & IMU

Truly smart boating

The new Mercury Gateway (single & multi engine) converts engine and system data to NMEA 2000* protocol for use on non-Mercury gauges and displays.

OUT/IN MULTI ENGINE INFORMATION	
RPM	Multiple Tank Levels
Voltage	Tabs
Oil Pressure	GPS Speed/COG/Lat-Long
Coolant Temperature	Depth
Tank Level Fuel	Sea Water Temp
Trim Position	Paddle speed
Water Pressure	Pitot speed
Check Engine Alarm	Rudder Angle
Fuel Flow	Gear Pressure
Engine hours	Gear Temp
Boost Pressure	Fuel Pressure
Oil Temperature	

* NMEA 2000 Certification Pending

Gateway Kits	P/N
Multi Engine SmartCraft Gateway (1 - 4 engines)	8M0105243

Features available depend on engine and installation

Mercury NMEA 2000 Gateway Software

Protocol Group Numbers (PGN)

<i>Single / Multi</i>		
Signal	NMEA2K PGN	Mode
RPM	127498 / 0x1F20A	RX / TX
Coolant Pressure	127489 / 0x1F201	RX / TX
Speed	128259 / 0x1F503	RX / TX
RPM	127488 / 0x1F200	RX / TX
Voltage	127489 / 0x1F201	RX / TX
Coolant Temperature	127489 / 0x1F201	RX / TX
Fuel Pressure	127489 / 0x1F201	RX / TX
Fuel Level	127505 / 0x1F211	RX / TX
Fuel Tank Size	127505 / 0x1F211	RX / TX
Fuel Flow	127489 / 0x1F201	RX / TX
Oil Pressure	127489 / 0x1F201	RX / TX
Oil Temperature	127489 / 0x1F201	RX / TX
Gear Temp	127493 / 0x1F205	RX / TX
Gear Pressure	127493 / 0x1F205	RX / TX
Boost Pressure	127488 / 0x1F200	RX / TX
Trim position	127488 / 0x1F200	RX / TX
Rudder Angle	127245 / 0x1F10D	RX / TX
Depth	128267 / 0x1F50B	RX / TX
Depth Offset	128267 / 0x1F50B	RX / TX
Sea Water Temp	130310 / 0x1FD06	RX / TX
Engine hours	127489 / 0x1F201	RX / TX
Manufacturer ID	060928 / 0xEE00	RX / TX
Alarm data	127489 / 0x1F201	RX / TX
Tabs	130576 / 0x1FE10	RX / TX
Battery	127508 / 0x1F214	RX / TX
ISO Acknowledge	059392 / 0x0E800	RX / TX

Signal	NMEA2K PGN	Mode
Course over Ground	129026 / 0x9F802	RX / TX
Speed over Ground	129026 / 0x9F802	RX / TX
GPS Position	129025 / 0x1F801	RX / TX
Address Claim	060928 / 0x0EE00	RX / TX
Product Info	126996 / 0x1F014	RX / TX
Signal	J1939 PGN	Mode
RPM	61444 / 0xF004	TX
Voltage	65271 / 0xFE7F	TX
Coolant Temperature	65262 / 0xFEE4	TX
Fuel Level	65276 / 0xFEFC	TX
Fuel Flow	65266 / 0xFE72	TX
Oil Pressure	65263 / 0xFEEF	TX
Boost Pressure	65270 / 0xFE76	TX
Engine hours	65253 / 0xFEE5	TX
Manufacturer ID	61182 / 0xEEFE	TX
Alarm data	65226 / 0xFECA	TX

