

# SEALINE

THE DIFFERENCE IS EVERYTHING

**C | S | F SERIES**

SEALINE C | S | F SERIES



[www.sealine.com](http://www.sealine.com)

# WELCOME ABOARD

C Series. C490, C450.

S Series. S510, S450, S380.

F Series. F490, F450, F380.



## LIKE NO OTHER.

Sealine has been pushing the boundaries of boat design for over 40 years. The result is a truly individual British design that brings you a luxurious, handcrafted world that feels distinctive – both inside and out.

From the very beginning, the intent behind every Sealine design has been to ensure that no space is wasted, to maximise stowage and leave you with the purest sense of freedom.

That attention to detail is evident as soon as you board. A class-leading length to beam ratio allows for a greater internal volume, a beamy cockpit area and the kind of social space you would normally associate with a larger boat. Innovative use of space delivers everything from the 360° views on the upper deck of the C and F Series, to cutting-edge conversions like the flexible cockpit system of the S450. That dedication to space and light can be felt inside the boat where windows, sunroofs and patio doors are perfectly placed to connect you to everything and everyone. So even when you're inside, you'll feel as if you're outside.

**THE DIFFERENCE IS EVERYTHING.**



## THE VERY BEST OF BRITISH.

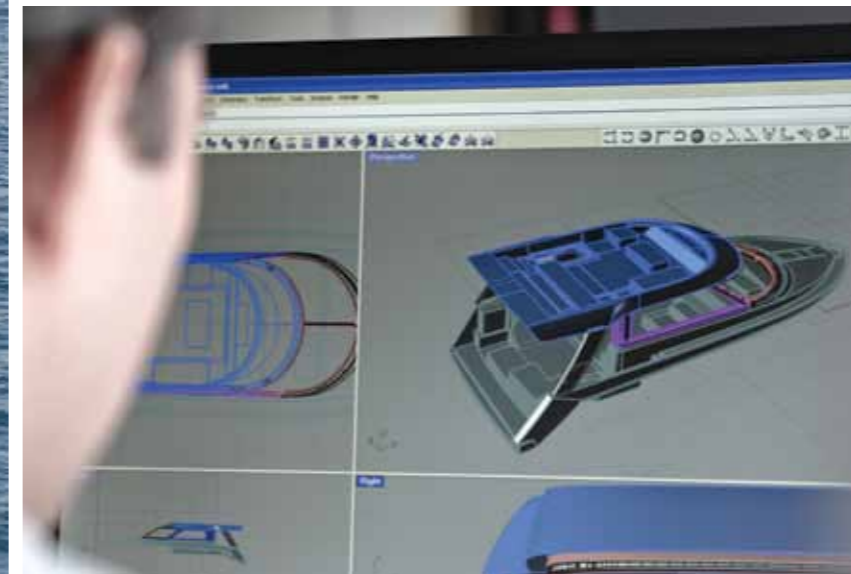
To create boats like no other, we talk to our customers and listen. Only once we fully understand what people want from their boat do we start to make that vision a reality.

From engineering to product development, fastidious fitters to skilled craftsmen and women, our team combines under the watchful eye of a Design Director with over 20 years' experience to create a unique experience full of light, space and luxury.

From the beautiful grain matched high-gloss wood of our tables to the meticulous double-stitching of a high comfort seat, every single element of a Sealine boat is perfected for fit, finish and made to last. Indeed, much of the furniture and finish within each boat is retained within Sealine itself – a long-standing tradition of the company and a testament to our dedication to traditional craftsmanship.

However, that hasn't stopped us incorporating modern materials and techniques. As keen boaters ourselves, throughout all areas of the business including the Managing Director, we understand the need to keep challenging ourselves and pushing the limits of what is possible.

Craftsmanship may be timeless. Superior design is constantly refreshed. When you purchase a Sealine boat you're not just buying the best, you're buying the very best of British.



## BOATS BUILT ON CONFIDENCE.

You can only have total freedom when you feel completely relaxed. At Sealine that can only come when your boat is built on rock-solid confidence.

From the proven deep V-hull design to the generous length to beam ratios and the robust integrity of our boats, everything works together to give you safe, and efficient cruising.

Sealine uses cutting-edge technology from design concept to manufacture. We use ergonomic design, structural analysis, composite engineering, FEA and CFD techniques to generate and refine cutting-edge yachts for a demanding world.

Our distinctive V-shaped hull maximises internal volume to produce the greatest possible waterline length. This ensures our hulls provide you with low-speed fuel efficiency and minimal pitching motion on rough seas. A comforting thought when you balance that against the exhilarating and responsive performance that allows you to genuinely plane.

On-board, our engines are designed to fit in a way that gives you easy access to a well-laid-out engine bay, while maximising accommodation around it.

Our POD drive engines have the ability to rotate the thrust axis to provide unparalleled manoeuvrability. And with contra-rotating propellers, give increased propulsion efficiency to help with cruising and fuel economy.

At our Sea Trial Centre, all models are rigorously tested. A Sealine boat will be put through a whole year's worth of typical usage in just three months. What's more, these demanding trials are conducted by our product development team including our own yacht master, a seasoned veteran at sea on-board Sealine boats to help validate every new design and build.

This is the investment and dedication you feel when you step on-board a Sealine. Together with our signature use of space, light and luxury, you can sit back, relax and simply enjoy every moment.



**C SERIES**

C490

## THE C490. ALWAYS READY TO LET YOU ESCAPE.

The stunning C490 is a true cruising boat that allows you to escape and explore in style and comfort, whatever the weather. No need to prepare canopies or covers before you set off, simply walk on and go. Beautifully crafted, it blends the very best of British design with extraordinary luxury detail and flexibility of use. A sense of freedom heightened by the boat's innovative use of space and light and the reassuring thought that it's always ready to let you make the most of every moment.



C490



The moment you step aboard the C490 you will be struck by the breathtaking 360° panoramic views that heighten the incredible sense of connection to the surrounding scenery. Walk through to the helm and the same uninterrupted views continue to create a true sense of boating freedom. It's a feeling you can take even further on warmer days by activating the electrically powered hardtop sunroof on the upper deck to bring the outside in. And as you put the C490 through its paces, you will begin to truly appreciate the proven hull technology and the nimbleness of the joystick control that makes manoeuvring a breeze.

The helm also offers the choice of two further forward facing seats as standard or an optional raised dinette space for additional sociable entertainment in true comfort.



C490



The sliding patio door opens effortlessly to create a best-in-class social space all on one level – the perfect connection between the light and airy saloon and the cockpit. The full beam cockpit with aft seating offers all the fun of sociable entertaining and alfresco dining with a wet bar, sink and space for a fridge and built-in barbecue. For sunny days, simply deploy the optional electric cockpit sunshade and relax or laze the day away on the 4m-wide teak laid Hi-lo bathing platform for even more fun in the water. And that sense of relaxation continues in the beautifully appointed light-filled saloon with a host of comforts including a raise-lower TV and optional bottle refrigerator.

Below deck, a talking-point feature is the open-plan galley that allows light to pour in courtesy of the striking atrium above you. Generously equipped, it comes with integrated cook top, microwave oven and enough space to accommodate a full height refrigerator/freezer and a dishwasher. Opposite the galley, the dinette offers maximum versatility with flexible layout arrangements including an office with single bunk or an optional two-bunk cabin.



C490



For a longer cruising experience, you can look forward to superb sleeping accommodation. The large mid-ship master cabin with en suite and separate rain shower provides full headroom, wardrobes and a comfortable sofa to relax and enjoy the views through the large bonded windows. There's even space allowed for a washer/dryer, while the luxurious forward cabin is a perfect place to relax and unwind and features an en suite and separate rain shower.

This clever use of space continues throughout the boat with ample and ingenious storage for comfortable long-distance cruising.

For added comfort and luxury, a selection of high quality wood finishes and sumptuous fabrics are available to personalise your C490 and create a home from home feel – even when you've escaped to another world.

# C490



Upper Deck with FWD Facing Seats



Optional Dinette



Lower Deck with L-shaped Dinette



Optional 3rd Cabin



Optional Office and Single Bunk



## ENGINE OPTIONS:

2 x Volvo Penta Diesel IPS 600 435hp  
(870 hp total), IPS pod drive

28/30 Knots\*

## PRINCIPAL DIMENSIONS:

Length overall:	15.06m	49' 6"	
Beam:	4.48m	14' 8"	
Height above waterline (inc. mast):	5.07m	16' 8"	
Draught (maximum):	1.05m	3' 5"	
Headroom:	1.95m	6' 5"	
Fuel capacity:	1500 ltr	330 UK gal	396 US gal
Water capacity:	505 ltr	111 UK gal	133 US gal
Displacement:	14,995 kg	14.75 tons	33,058 lbs



**C450 CONCEPT**

**LAUNCHING LATE 2013**

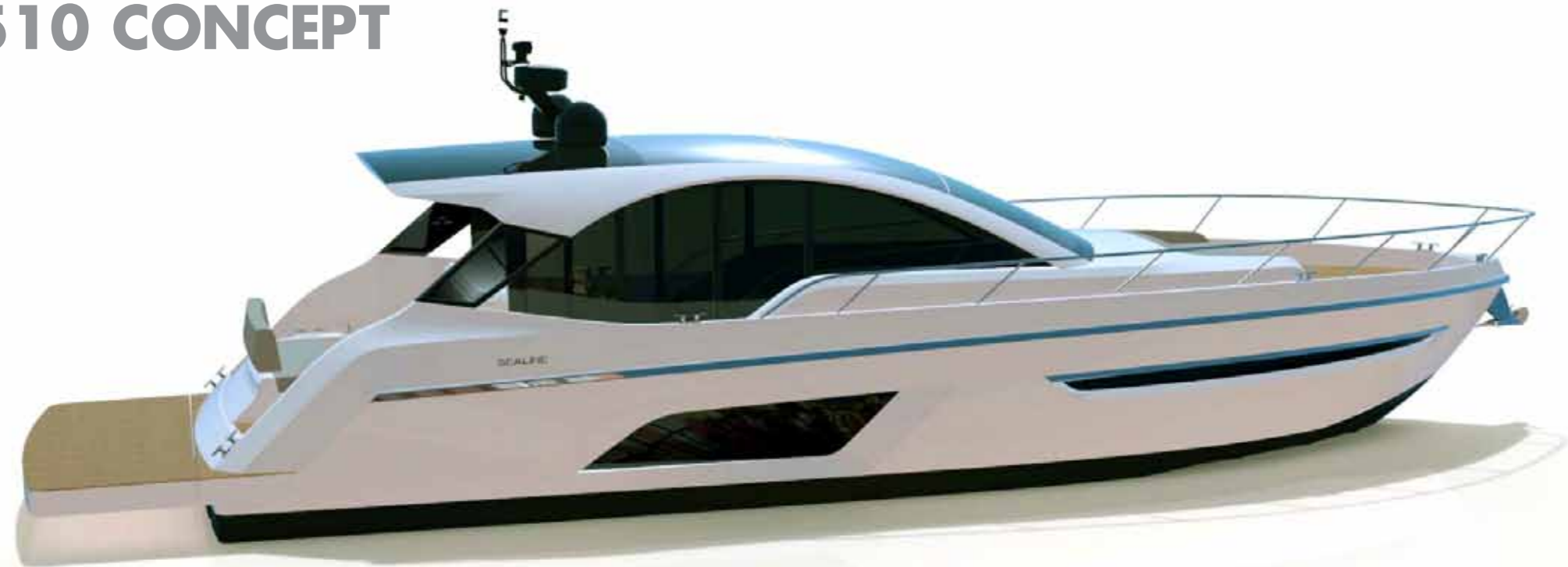


Concept only.

**S SERIES**



# S510 CONCEPT



**THE ALL-NEW S510  
IS COMING. AND IT'S  
SET TO MAKE WAVES.**



Concept only.

S450

## THE NEW S450 EMBODIES ONE SIMPLE PRINCIPLE – TO DELIVER MORE.

The distinctive S450 has been crafted to offer more social space than any other cruiser of its size. An electronic convertible cockpit system offers multiple layout options including comfortable alfresco dining for eight. It features a soft-top convertible roof system which conveniently folds away to allow the light and air to stream in. There's permanent sleeping for five, and an occasional double berth in the saloon that provides excellent sleeping options. Quite simply, it delivers all the flexibility you could ever need.



S450



The cockpit takes advantage of the full beam width to provide ample space to seat eight and comes with a wetbar, a sink and space for a BBQ and fridges. When not dining, an electronic control quickly converts the very same seating into a sunbathing area or into different seating arrangements. An extended bathing platform comes as standard, with the option to upgrade to a Hi-lo. At the helm you'll find two wide helm seats and a fully integrated dashboard plus two further forward facing seats to the port side so everyone can feel part of the action.

Perfect for outdoor living, the S450 opens up to allow the sun and breeze to stream in. And when it's time to take a cool break in the shade, the full-length electric soft-top convertible roof system can be deployed in seconds.



S450



Saloon Conversion.



However, to really appreciate how much space has been created within the S450, you simply need to take a tour of the living quarters. A beautifully styled saloon offers the freedom to dine in comfort and easily converts into a double berth, while the galley has enough room to accommodate a full height fridge freezer and generous worktop space.

S450



A luxurious full-width master cabin comes with double wardrobes plus a large separate shower compartment and head. The aft cabin with its en suite layout has three berths with versatile arrangements when the sterndrive engine option is chosen, and two berths that can be arranged as twin berths or a double when the IPS engine option is selected.

# S450



Main Deck



Lower Deck with Sterndrive engines



Lower Deck with IPS engines



## ESTIMATED PERFORMANCE

### ENGINE OPTIONS:

2 x Volvo Penta Diesel D6 330hp (660 hp total),  
Duoprop Sterndrive

30/32 Knots\*

2 x Volvo Penta Diesel D6 370hp (740 hp total),  
Duoprop Sterndrive with Aquamatic Joystick

32/34 Knots\*

2 x Volvo Penta Diesel IPS 600 435hp  
(870 hp total), IPS pod drive

32/34 Knots\*

### PRINCIPAL DIMENSIONS:

Length overall:	13.90m	45' 7"	
Beam:	4.48m	14' 8"	
Height above waterline (inc. mast):	4.75m	15' 7"	
Draught (maximum with sterndrives down):	0.98m	3' 3"	
Headroom:	1.95m	6' 5"	
Fuel capacity:	1200 ltr	264 UK gal	318 US gal
Water capacity:	315 ltr	69 UK gal	83 US gal
Maximum displacement:	11,447 kg	11.27 tons	25,240 lbs



S380

# THE AWARD-WINNING S380. UNLIKE ANY OTHER SPORTS CRUISER IN ITS CLASS.

The clean and crisp lines of the S380 create a simple, elegant design. This iconic boat holds five permanent berths, a first for a boat of this class, and an innovative roof system that goes from open to closed in seconds. Forget what you know about sports cruisers. The S380 delivers a generous length to beam ratio.



S380



Step into the stylish cockpit of the S380 and you'll immediately notice an extraordinary amount of space – extremely versatile space. Simply fold over the cockpit table and lower it down to create a generous sunbed area with wetbar opposite. And should the weather change for the worse, a soft-top convertible roof system can enclose the all weather cockpit with ease.

When you want to enjoy the open sea, a twin helm seat with bolster offers great visibility through the screens, while a distinctive deep V-hull ensures an efficient, stable and comfortable ride at any speed.

Below deck, a fresh stylish interior offers an exceptional head height of 6ft 4 inches. Coupled with the large saloon skylight, this helps to create a bright and spacious atmosphere. A large fully equipped L-shaped galley provides excellent storage that allows you to cater for everyone.



S380



Double doors from the saloon open to reveal the forward cabin and create an open plan feel throughout; again the large hatch skylight bathes the area in natural light. The en suite and day head has a separate full height stall shower and separate head which offer practicality and comfort, while the aft cabin holds three permanent berths – a first for this class of boat – and, again, another large hatch skylight that adds that distinct feeling of space and freedom.

# S380



Main Deck



Lower Deck



## ENGINE OPTIONS:

2 x Volvo Penta Diesel D4 260hp (520 hp total),  
Duoprop Sterndrive

31/33 Knots\*

2 x Volvo Penta Diesel D4 300hp (600 hp total),  
Duoprop Sterndrive with Aquamatic Joystick

32/34 Knots\*

## PRINCIPAL DIMENSIONS:

Length overall:	11.83m	38' 10"	
Beam:	3.77m	12' 4"	
Height above waterline (inc. mast):	3.68m	12' 1"	
Draught (maximum with sterndrives down):	1.09m	3' 7"	
Headroom:	1.93m	6' 4"	
Fuel capacity:	744 ltr	164 UK gal	198 US gal
Water capacity:	214 ltr	47 UK gal	56 US gal
Displacement:	7,885 kg	7.76 tons	17,383 lbs





**F SERIES**



# F490

## THE F490. EXPLORE NEW HORIZONS IN A SPACE LIKE NO OTHER.

The F490 is our most customizable model with 3 flybridge configurations, 3 saloon configurations, and 3 variations of cabin layout on the lower deck. The permutations are endless.

Beyond the striking contemporary exterior of the new F490 and the detailed luxury interior, lies a whole world of sociable cruising, backed by the reassurance of proven technology. From the large flybridge with alternative layouts, to the light-filled upper deck and the innovative use of space throughout the boat, there is a clear focus on lifestyle and creating good times for all on board. Welcome to a place where you can come together and enjoy all those journeys and memories.

Step aboard the F490 and you'll immediately notice - and feel - the substantial space of the cockpit created by the dramatic length to beam ratio. This innovative use of space liberates all the room you need for relaxed bathing and alfresco dining with a wet bar for sociable entertaining and enough space to accommodate a fridge and BBQ. And when you want to take a break from entertaining, there's always our optional Hi-lo bathing platform to bring the lure of the water even closer.



F490



Walk into the saloon and you'd be forgiven for thinking you were on board a far larger boat. The huge wraparound windscreen lets an amazing amount of light stream in to create the distinctive Sealine feeling of space and freedom. A sense strengthened by the breathtaking 360° panoramic views. And with a world of luxury and the finest British craftsmanship all around you there is no place quite like it for relaxing. Added touches such as the raise-lower TV and optional bottle refrigerator let you really chill.

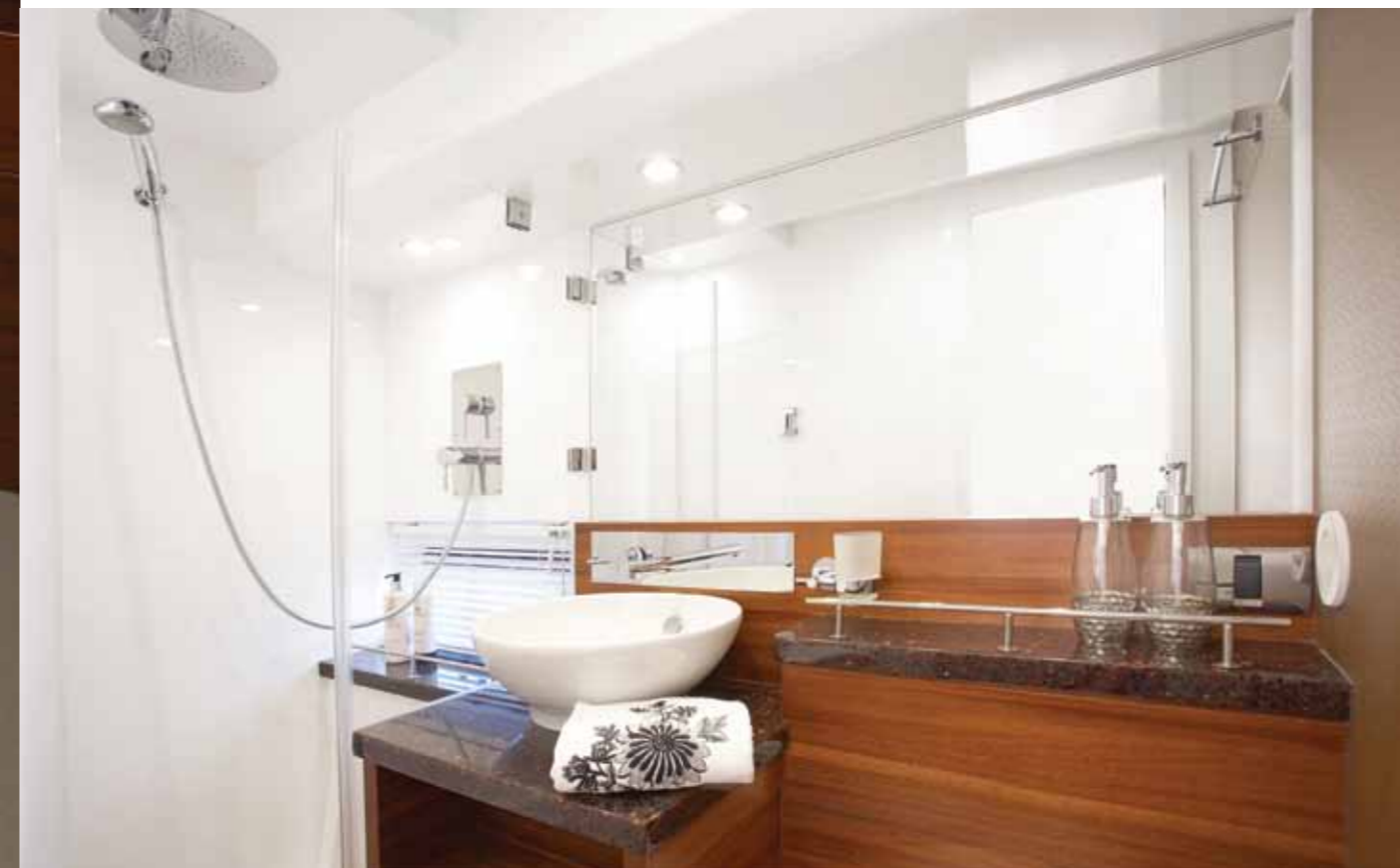
Climb up to the flybridge and you'll see the theme of sociability is taken to a whole new level with two flybridge layouts to choose from. Whether you opt for the aft sunpad, or a complete entertaining area in its place with built-in barbecue and refrigerator, the emphasis is firmly on fun and relaxation. And if it's shade you're looking for then the optional hydraulic bimini cover will give you just that.



At the helm on the main deck you'll appreciate the Sealine understanding of space more than ever with uninterrupted views creating a heightened feeling of freedom. This is all underpinned by the solid integrity of the hull and the F490's undoubted prowess on water, with the added finesse of the joystick control making manoeuvres simply effortless. You can share all of this experience with confidence with the two forward facing seats for fellow passengers – or, if you prefer, use that area as an optional raised dinette space for dining in style.

On the lower deck in the heart of the boat, the atrium lets light pour into the fully equipped galley. Spacious and airy it's furnished with an integrated hob and oven and enough space to accommodate a full height refrigerator/freezer and a dishwasher opposite. The dinette opposite the galley offers a selection of flexible layouts from the standard comfortable dining to an office with one bunk bed or a two bunk bed cabin. The choice is all yours.

F490



The midship full beam master cabin has the freedom of full headroom, large bonded windows for plenty of natural light, seating and room for a washer/dryer. Add in the en suite with separate stall rain shower, and this is the perfect place to relax and unwind. The luxurious, full-width forward guest cabin features an en suite and separate rain shower.

This clever use of space is a theme throughout the boat with ample and inventive storage all around. Add to this a number of flexible layout options and a choice of high quality fabrics and woods to create an even more unique boating experience, and the F490 really does give you an unrivalled sense of freedom.

# F490



Upper Deck with FWD Facing Seats



Optional Dinette



Optional Saloon



Lower Deck with L-shaped Dinette



Optional 3rd Cabin



Optional Office and Single Bunk



Flybridge – Sun Lounge



Flybridge – Seating



3<sup>rd</sup> Flybridge Option\*



Concept only.

3<sup>rd</sup> Flybridge Option\*

\*Coming soon



Optional Saloon layout

## ENGINE OPTIONS:

2 x Cummins Diesel QSB 5.9 480hp  
(960 hp total), Zeus pod drive

28/30 Knots\*

## PRINCIPAL DIMENSIONS:

Length overall (inc. Hi-Lo Platform):	15.06m	49' 6"	
Beam:	4.48m	14' 8"	
Height above waterline (inc. mast):	6.25m	20' 6"	
Draught (maximum):	1.25m	4' 1"	
Headroom:	1.95m	6' 5"	
Fuel capacity:	1500 ltr	330 UK gal	396 US gal
Water capacity:	505 ltr	111 UK gal	133 US gal
Displacement:	15,768 kg	15.52 tons	34,763 lbs



F450

## THE F450. DESIGNED FOR LIVING LIFE TO THE FULL.

For size and sociability, there's nothing quite like the F450. This flybridge cruiser offers unrivalled space for entertaining with alfresco dining for six, berths to sleep five, and a sunbathing area that converts in minutes.

From the very outset, the bold exterior of the F450 suggests style. And once inside it doesn't disappoint. The open-plan feel and seamless connectivity to the outdoors allows light to flood in. An extensive choice of high quality wood finishes and fabric options allow you to create a luxurious home from home feel.



# F450



The cockpit is ideal for entertaining with L-shaped seating, while an optional fridge and BBQ add to the fun of alfresco dining. The area also features such practical additions as a large lazarette locker with ample storage space.

Entry to the saloon is through a three-part glass sliding door – an easy access point that transforms the cockpit and the saloon of this single-level deck into one large versatile social space. At the helm, twin seats are a welcome addition to the craft and so is the hull design with its tried and tested propulsion system – able to deliver stable cruising at all speeds.

Make your way up to the flybridge and you'll discover an incredibly versatile space. Significantly larger than its predecessor, the F450 flybridge has room for six to dine in comfort around a large dining table. This area can also be transformed into a large sunbed as the seats fold down, while an optional top loading cool box and an optional illuminated hydraulic bimini cover allow you to make the most of the world around you.

F450



Back in the effortlessly stylish saloon, that feeling of light and space continues with the stunning 360° panoramic views. A comfortable L-shaped seating and sofa area can easily be converted into an occasional double berth. There's also easy access to an optional fridge, raise-lower TV and a beautifully crafted table, which can be moved outside.

A fully equipped open plan galley can be found to the port side, an atrium allows light to flood in, while there's a high-level oven, double sink, hob and stowage space in abundance, including wine glass and under floor storage.



F450

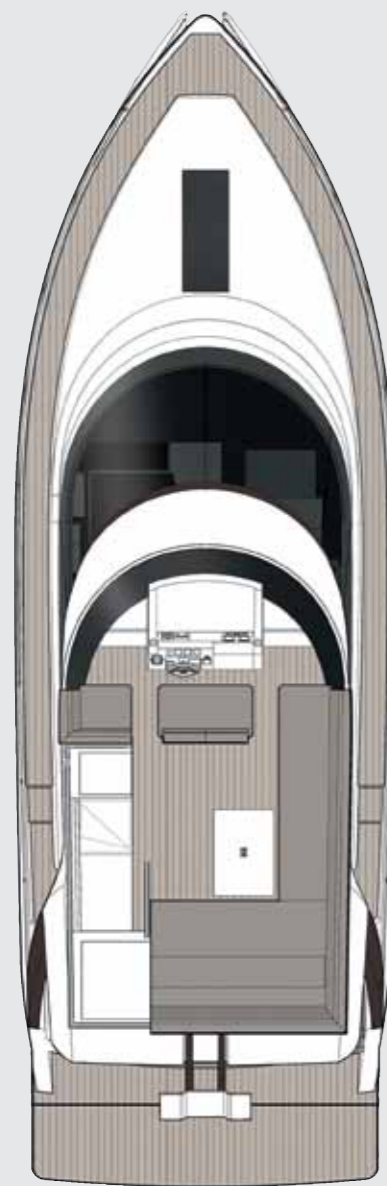


Below deck there are two cabins offering five berths as standard. The luxurious master cabin, with its clever use of storage space, gives you plenty of room to unwind. Meanwhile, a separate en suite shower and toilet facilities create a relaxing spa-like environment. A skylight above the bed illuminates the room and creates a wonderful feeling of space. Cabin windows let in extra light and offer peaceful waterside views.

For additional space and privacy, the F450 offers a midships cabin that can be configured as either three separate berths, a twin or double. This cabin also features a rain shower and separate toilet with a skylight, while a pullout door creates privacy for the mid cabin when the dayhead is being utilised.

Like the master cabin, there is plenty of storage space and the large rectangular cabin windows provide extra light for an airy, relaxing feel.

# F450



Flybridge



Main Deck



Lower Deck



## ENGINE OPTIONS:

2 x Volvo Penta Diesel IPS 600 435hp  
(870 hp total), IPS pod drive

30/32 Knots\*

## PRINCIPAL DIMENSIONS:

Length overall:	13.90m	45' 8"	
Beam:	4.48m	14' 8"	
Height above waterline (inc. mast):	5.71m	18' 9"	
Draught (maximum):	1.30m	4' 3"	
Headroom:	1.95m	6' 5"	
Fuel capacity:	1200 ltr	264 UK gal	318 US gal
Water capacity:	450 ltr	99 UK gal	119 US gal
Displacement:	13,052 kg	12.85 tons	28,800 lbs



**F380**

**WITH THE ALL-NEW  
F380 APPROACHING,  
SEALINE IS HEADING  
TOWARDS A NEW  
HORIZON.**

**LAUNCHING LATE 2013**



Concept only.



Sealine International Limited, Whitehouse Road,  
Kidderminster, Worcestershire DY10 1HT England

Tel: +44 (0) 1562 749100 | Fax: +44 (0) 1562 747709

Email: [info@sealine.com](mailto:info@sealine.com) | Web: [www.sealine.com](http://www.sealine.com)

Authorised Dealer

Sealine International has an extensive worldwide dealer network, please see [sealine.com](http://sealine.com) for dealers in your area.

\*All performance figures are given in good faith and are intended as an indication. These figures cannot be guaranteed as top speed, in particular, is affected by the cleanliness of the hull, conditions of the propellers, weight carried and air/sea temperatures. Sealine International reserve the right to change specifications in line with the company policy of improvement through research and development. Errors and omissions excepted. Models shown in this brochure may include additional cost options that are not part of the standard specification. Accessories shown are for illustrative purposes only and are not included in the purchase price. Please check with your dealer for a full list of inclusions.