

Merry Fisher

605 Série 2

Merry Fisher 605 Série 2

SUMMARY

- SPECIFICATIONS
- KEY POINTS
- EXTERIOR
- INTERIOR
- ATMOSPHERES
- ELECTRONIC PACKAGES
- TECHNICAL DATAS



JEANNEAU



MAIN SPECIFICATIONS

Overall length :

Without options	5,66 m / 18'6"
With options	6,65 m / 21'9"
Hull length	5,51 m / 18'0"
Overall beam	2,44 m / 8'0"
Draft	0,45 m / 1'5"
Air draft	2,48 m / 8'1"
Weight (without engine)	1200 Kg / 2646 lbs
Fuel capacity	100 L / 26,4 US gal
Water capacity (option)	50 L / 13,2 US gal

Berths	3/4
Max engine power	115 HP / 85 Kw
Engine shaft length	508 mm
EC category	C – 6
Designers	Centkowski & Denert design / Jeanneau design

ALL THE QUALITIES OF A LARGER MODEL !

With a contemporary look and clever layout, the Merry Fisher 605 Series 2 has been entirely redesigned for getting away, having fun and living aboard in full comfort.

Her newly redesigned roof (as on the MF695 S2) and windows, as well as her streamlined silhouette, lend her exceptional elegance. Additional space on board translates into a longer interior space and cockpit.

Her large, flush aft swim platform flows from the cockpit for easy movement about the boat, and it features a sliding bench system to optimise space on board. Her large U-shaped cockpit transforms into a sundeck. Her interior features a perfect, unencumbered view of the horizon and a capacity to sleep four people.

As on the Merry Fisher 695 Series 2 and the Merry Fisher 795 Series 2, the layout features generous storage beneath the saloon.

Inviting, bright and elegant, this new model will win the hearts of many boaters.

Trailorable, this entry-level Merry Fisher is the ideal boat for the first family outings on the water.



The Merry Fisher 605 Série 2 is **transportable**

- Entry-level model Merry Fisher
- Design : same spirit as Merry Fisher 695 Série 2
- Max engine power 115 hp

EVOLUTIONS COMPARED TO THE MERRY FISHER 605 Serie 1

Style evolutions

Large windows



Large « flush » platforms (option)

Bigger cockpit

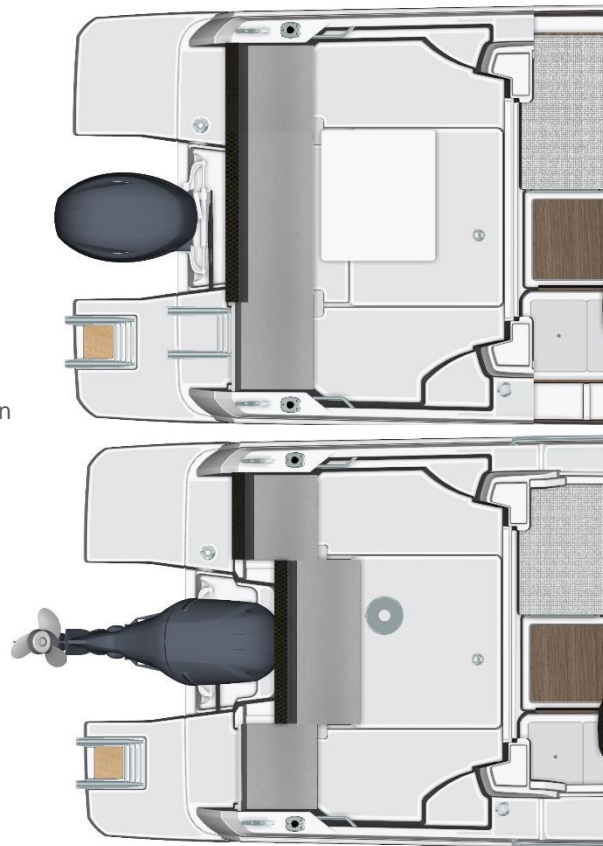
New stickers model year 2025

A VERY LONG AFT COCKPIT

Aft sliding bench with long clearance :

- It enables to expand exterior and interior spaces while the engine is down
- It enables to lift the engine up
- The aft bench remains available when the engine is up

Can be slided with one hand



A MODULAR COCKPIT TO ADAPT TO CUSTOMERS NEEDS

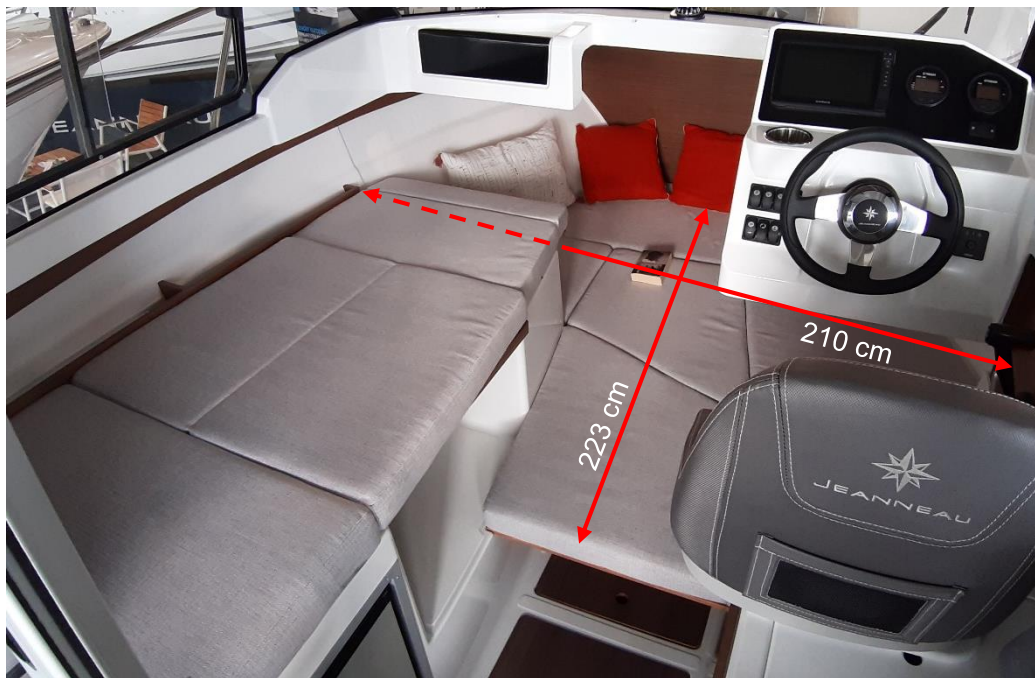
Standard : aft bench with removable corner seats (fishing)



Option : U cockpit saloon with a table, convertible into a sunpad



Large and bright interior : the windows are going down to the table



Very large double berth in mid cabin (option)

+

Cushions for berth in saloon (option)



Trim level premiere :

Galley with double sink and manual pump with portable tank in the galley storage

Option :

Pressured fresh water system with portable tank in lieu of the manual pump



Fridge located under the saloon seat :
It enables a double storage in the galley





New large storage under the saloon



Location for chemical toilets (option)

New storage racks for paddle (option)



Standard : Handrails on the roof



Option : Cockpit sun awning

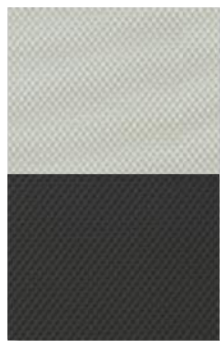
Option : Cockpit aft closure kit
(requires cockpit sun awning option)

Design : Jeanneau - Vavaruste

MERRY FISHER

EXTÉRIEUR / EXTERIOR

SELLERIE /
UPHOLSTERY



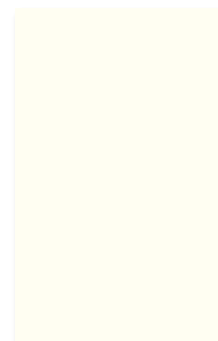
DIAMANTE
MOONLIGHT /
DIAMANTE
CARBON

CAPOTAGES /
AWNINGS



SUNBRELLA
GRAPHITE

PROTECTIONS /
COVERS



PVC
STAMOID
WHITE

MERRY FISHER

INTÉRIEUR / INTERIOR

**SELLERIE /
UPHOLSTERY**



JUMBO SILVER

**MENUISERIES (Standard) /
WOOD**

**MEUBLES /
FURNITURES**

GREY WALNUT

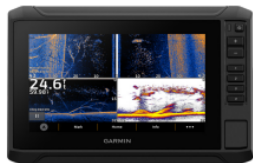
**FLOORBOARD /
PLANCHERS**

BROWN OAK



ELECTRONIC PACK

ECHOMAP UHD2 72sv
Chartplotter/Sonar combo with 7"
keyed-assist touchscreen display.



Garmin GT23M-TM
Mid-Band CHIRP Traditional /
CHIRP ClearVu
Depth and Temperature

UPGRADE

| ECHOMAP UHD2 92sv (9") INSTEAD OF AN ECHOMAP UHD2 72sv (7")


ECHOMAP UHD2 92sv
Chartplotter/Sonar combo with 9"
keyed-assist touchscreen display.



LONGUEURS ARBRES MOTEURS / HEIGHT OF OUTBOARD ENGINES SHAFTS

Modèle	Motorisation	Pied d'embase / Shaft length	Longueur en mm / Length in mm	Longueur en pouces / Length in inches	YAMAHA	MERCURY	HONDA	SUZUKI
Merry Fisher 605 Serie 2	mono / single	LONG	508	20"	TL	L	L	L

RÉGIMES - VITESSES - CONSOMMATION / RPM - SPEED - CONSUMPTION

Merry Fisher 605 S2							
		YAMAHA F100FETL					
		<u>Caractéristique / Specifications:</u>					
		1 moteur In Bord / In Board engines: F100FETL /LB					
		Hélice / Propeller: K12 Talon					
Déplacement total du bateau / Total displacement of boat tested: 2122 Kg							
Regime en tours par minute au tableau de bord / RPM on instrument panel	Vitesse en nœuds moyenne au gps / Average speed on gps in knots	Consommation moteur en litres par heure / consumption engine in liter an hour	Rendement / Efficiency (L/NM = Liter per Nautical Mile)	Consommation totale en USGal / heure Total consumption in USGal/h	Rendement / Efficiency (USGal/NM)	Autonomie en miles nautiques (avec réserve 20%) /Range in Nautical Miles (with 20% fuel safety)	Remarques / Comments
600	1,7 Nds	1,3 l/h	,76 L/NM	,34 USGal/h	,20 USGal/NM	131 NM	
1000	2,9 Nds	1,7 l/h	,60 L/NM	,45 USGal/h	,16 USGal/NM	168 NM	
1500	4,2 Nds	2,9 l/h	,70 L/NM	,77 USGal/h	,18 USGal/NM	143 NM	
2000	5,2 Nds	3,9 l/h	,76 L/NM	1,03 USGal/h	,20 USGal/NM	132 NM	
2500	6,0 Nds	5,9 l/h	,98 L/NM	1,56 USGal/h	,26 USGal/NM	102 NM	
3000	6,7 Nds	9,2 l/h	1,37 L/NM	2,43 USGal/h	,36 USGal/NM	73 NM	
3500	7,4 Nds	12,8 l/h	1,73 L/NM	3,38 USGal/h	,46 USGal/NM	58 NM	
4000	8,3 Nds	16,7 l/h	2,01 L/NM	4,41 USGal/h	,53 USGal/NM	50 NM	
4500	12,3 Nds	22,2 l/h	1,80 L/NM	5,86 USGal/h	,48 USGal/NM	55 NM	
5000	19,3 Nds	35,1 l/h	1,82 L/NM	9,27 USGal/h	,48 USGal/NM	55 NM	
5500	22,5 Nds	38,1 l/h	1,70 L/NM	10,06 USGal/h	,45 USGal/NM	59 NM	
5800	24,1 Nds	38,9 l/h	1,61 L/NM	10,28 USGal/h	,43 USGal/NM	62 NM	
<u>Conditions optimales théoriques et purement indicatives des essais: /Optimal theoretical conditions, purely indicative for trials :</u>							
Coque neuve, vent 12nds, mer belle petit clapot, pas d'antifouling / new hull, wind 12 knots, nice little choppy sea, no antifouling							
10/09/2020							

RÉGIMES - VITESSES - CONSOMMATION / RPM - SPEED - CONSUMPTION

Merry Fisher 605 S2



YAMAHA F115BETL

Caractéristique / Specifications:

1 moteur In Bord / In Board engines: F115BETL /LB

Hélice / Propeller: K12 Talon

Déplacement total du bateau / Total displacement of boat tested: 2122 Kg

Regime en tours par minute au tableau de bord / RPM on instrument panel	Vitesse en nœuds moyenne au gps / Average speed on gps in knots	Consommation moteur en litres par heure / consumption engine in liter an hour	Rendement / Efficiency (L/NM = Liter per Nautical Mile)	Consommation totale en USGal / heure Total consumption in USGal/h	Rendement / Efficiency (USGal/NM)	Autonomie en miles nautiques (avec réserve 20%) /Range in Nautical Miles (with 20% fuel safety)	Remarques / Comments
600	1,8 Nds	1,2 l/h	,67 L/NM	,32 USGal/h	,18 USGal/NM	150 NM	
1000	2,5 Nds	1,9 l/h	,78 L/NM	,50 USGal/h	,20 USGal/NM	129 NM	
1500	3,9 Nds	3,1 l/h	,79 L/NM	,82 USGal/h	,21 USGal/NM	126 NM	
2000	5,1 Nds	4,6 l/h	,90 L/NM	1,22 USGal/h	,24 USGal/NM	111 NM	
2500	6,2 Nds	7,0 l/h	1,14 L/NM	1,85 USGal/h	,30 USGal/NM	88 NM	
3000	6,7 Nds	9,5 l/h	1,43 L/NM	2,51 USGal/h	,38 USGal/NM	70 NM	
3500	7,3 Nds	13,1 l/h	1,79 L/NM	3,46 USGal/h	,47 USGal/NM	56 NM	
4000	8,8 Nds	18,1 l/h	2,06 L/NM	4,78 USGal/h	,54 USGal/NM	49 NM	
4500	11,8 Nds	23,1 l/h	1,97 L/NM	6,10 USGal/h	,52 USGal/NM	51 NM	
5000	19,1 Nds	25,7 l/h	1,35 L/NM	6,79 USGal/h	,36 USGal/NM	74 NM	
5500	22,1 Nds	32,1 l/h	1,46 L/NM	8,48 USGal/h	,38 USGal/NM	69 NM	
5900	24,3 Nds	38,9 l/h	1,60 L/NM	10,28 USGal/h	,42 USGal/NM	62 NM	
6300	26,3 Nds	41,9 l/h	1,60 L/NM	11,07 USGal/h	,42 USGal/NM	63 NM	
<p><u>Conditions optimales théoriques et purement indicatives des essais: /Optimal theoretical conditions, purely indicative for trials :</u> Coque neuve, vent 12nds, mer belle petit clapot, pas d'antifouling / new hull, wind 12 knots, nice little choppy sea, no antifouling</p>							
09/09/2020							

CERTIFICATION CE / EC REGULATION

MODELES MODELS	ATTESTATION N° / CERTIFICATE N°	LONGUEUR COQUE* / HULL LENGTH*	LARGEUR COQUE* / HULL BEAM*	CHARGE MAX / MAX LOAD	CATEGORIE / CATEGORY	PERSONNES / PERSONS	PUISSANCE / MAXI POWER		MASSE MAXI MOTEUR / MAX ENGINE WEIGHT
		Mètres / Meters	Mètres / Meters	Kg			Kw	CV / HP	Kg
Merry Fisher 605 Serie 2	B SPB 20046 MM	5,51	2,44	940	C	6	90	115	230

Pour les homologations en cours, toutes les informations doivent être considérées comme provisoires.

Les catégories et nombre de personnes indiqués correspondent à la demande faite par le chantier, pas à une confirmation.

When the EC regulation is in progress, please consider all information as provisional.

The categories and number of persons written are requested by the Jeanneau Yard, not confirmed.

* Indiqué sur la DEC (Déclaration Ecrite de Conformité)

* Written on the WSC (Written Statement of Compliance)

ND: Non Disponible / No Data

KIT AMARRAGE - MOUILLAGE / *MOORING - ANCHORING KITS*

Bateaux / Boats	MOUILLAGE / ANCHORING							AMARRE / MOORING		PARE-BATTAGES / FENDERS	
	Code / Ref	Ancre / Anchor		Chaîne / Chain		Câblot / Line		Code / Ref	Désignation / Détail	Code / Ref	Désignation / Détail
Merry Fisher 605 Serie ²	162302	10 kg	Plate / Flat	8 mm	15m	25m	14mm	043143	4 x D12 L8000	189031	4 x 645 x D.150

This is not a contractual document.
This document was updated in July 2024.
It may contain illustrations or text representing
or referring to optional equipment.
If changes appear on the next model year,
with regard to equipment or options referred to in this document,
only the current Jeanneau rate will apply.

