



LOCAL REVIEW

Jeanneau Merry Fisher 795 Series 2

A MERRY ALL ROUNDER

Trying to get something to keep the whole family happy can be a tough task, but this new offering does its best.

WORDS AND PICS **Kevin Smith**



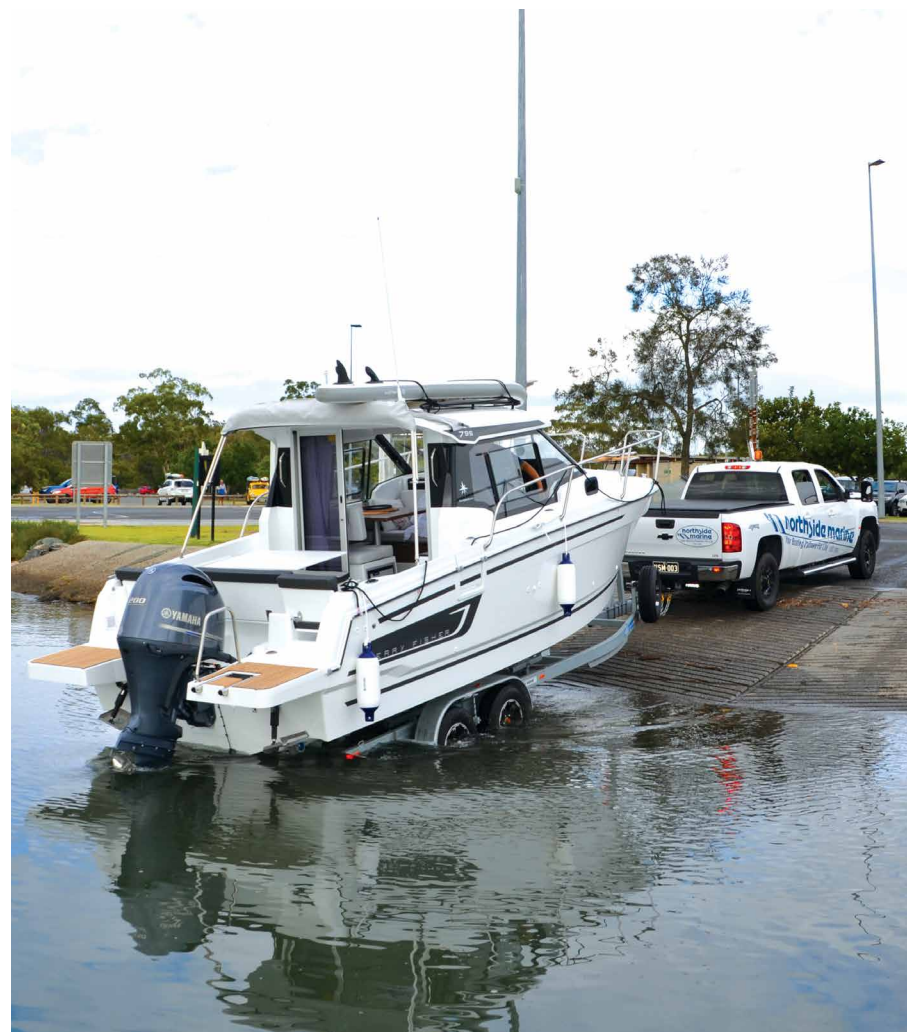
CLOCKWISE FROM LEFT French flair; Extra storage for large items can be had on the roof; It's a spot for entertaining; The 795 is packed with multi-purpose capabilities



With so many variants, styles, and models of trailer-boats to choose from nowadays, it's quite a daunting task for a new or upgrading buyer to make that final decision to sign on the dotted finance line. This is especially true for those with limited boating knowledge and experience. But, thorough due diligence will most certainly assist and pay off in finding the best price, quality, and suitability for your needs.

Attempting to find the perfect boat? Well, you can get close. However, there will always be a touch of compromise involved, plus budget is often a key factor. If it's a dedicated fishing, cruising, wakeboarding or skiing boat, the options are endless, however, combining two or more styles into one is where it becomes tricky, as you will always have more of one style or purpose than the other. It all comes down to who has the final say — mum and the kids wanting comfortable cruising, or your dedicated fisho ready to get out and cast a line.

The boat on review today that's attempting to solve this problem is Northside Marine's Merry Fisher 795 Series 2. Produced by Jeanneau, which is part of the French Beneteau Group, the Merry Fisher range caters for those looking for a boat with multi-purpose capabilities or uses. So, for those looking at a trailerable boat with an abundance of creature comforts and features suited to family cruising, the odd overnighters and even something suited to a bit of fishing and diving, then take a look at what the new Merry Fisher 795 Series 2 has on offer.



FROM THE OUTSIDE

First up, she's a fair-sized beast on the trailer and needs to be towed to oversize regulations due to the 2.82m beam. On the weight side, the 795 standard hull is around the 2300kg mark, so all up I would estimate the full rig to be just over 3 tonnes and towable with a standard vehicle rated to 3.5 tonnes. If long-distance trips are on the cards, smaller F-trucks or 1500 Ram would probably be the go.

At a glance, the design of the new Merry Fisher 795 Series 2 is typical of the Beneteau Group, with a nice blend of soft and sharp lines providing a modern look that won't age. The large screen and side glass, spacious looking cockpit, enclosed saloon/cabin with hardtop and new racks for gear, most certainly add to the all-seasons cruising and adventure appeal.

“The outboard motor with twin swim platform is appealing, as most small cruisers have stem drives or inboards fitted as standard”



CLOCKWISE FROM LEFT Curved stainless steel adds a sleek finish; This cruiser is well-balanced to say the least; Plenty of space to relax with wrap-around modular seating

ONBOARD EXPLORATION

Hopping onboard, I liked the dual boarding options via the ladder and transom door, or starboard gunwale into the cockpit straight away. The outboard motor with twin swim platforms lined with teak on either side is also appealing, as most small cruisers have stern drives or inboards fitted as standard. The outboard not only opens up the cockpit, but also makes servicing far easier and cheaper.

For a cruiser of this size, the new wider beam adds to the cockpit size, and it's well-balanced, rather than the boat being all about maximum saloon and cabin size. The wrap-around modular seating with outdoor dining table insert creates the perfect spot to relax and enjoy the outdoor elements with the family or friends. The table can also be lowered, and a cushion added to create a sunbed, as well as the rear bench folding forward

to allow for maximum tilt on the motor. There's plenty of deck storage with easy access to the batteries and plumbing, while the cockpit bimini is a good option to fit for our hot Aussie summers.

For those a tad more dedicated to fishing, adding accessories like rod-holders and bait-board to suit can easily be done, as well as the modular seating being removable to create better fishability at the gunwales.

Moving into the saloon, I do like the sliding door set up as it's a solid stack that makes no noise, opens up for all seasons of boating, as well as eliminating the need to consistently unpack all your gear if your boats not stored in a secure area or lives on your pontoon. Just grab what you need, lock up, and go.

Once again, the new Series 2 hull is wider and higher, and this makes a significant difference to the internal space and layout volume. Innovative

thought has gone into the internal layout with numerous features included, all done without compromising on space. The cockpit's full wrap-around glass and sunroof maintain an open and airy feel, with heating and air conditioner options available for those chasing that extra bit of comfort.

On the port side, the small dinette caters for four, as well converts to an extra bed for guests or the kids. The rear bench has storage space for gear, and houses the 12V 40L fridge below, along with the front seat being forward and rear facing. The owner of this vessel opted for the luxury galley/kitchenette with sink and gas stove, positioned aft of the captain's seat. The captain's seat is hinged and folds forward to create a full prep area for food and drinks. The cupboard below has ample room for groceries or other gear, however, in my opinion it looked like the ideal spot for a large slide-out esky.



Facts & Figures
JEANNEAU 795 MERRY FISHER SERIES 2

PRICE AS TESTED
\$180,338

OPTIONS FITTED
Yamaha F200XCA, Trim level premiere with shower, portside sliding window, screen wash system, and more), Luxury teak swimming platforms, Garmin VHF215, luxury galley with gas stove, Fusion RA70N audio pack.

PRICED FROM
\$153,111 including, the Yamaha F175XCA and Redco Merry Fisher Trailer

GENERAL
TYPE Cruiser
MATERIAL GRP
LENGTH 7.19m (23ft 7in)
BEAM 2.82m (9ft 3in)
WEIGHT 2300kg

CAPACITIES
PEOPLE 9
BERTHS 4
REC. HP 250hp
MAX. HP 250hp
FUEL 280L
WATER FRESH 100L

ENGINE
MAKE/MODEL Yamaha F200 XCA
TYPE 4-Stroke, 16 Valve DOHC VCT Direct Action In-Line 4
WEIGHT 222kg
DISPLACEMENT 2785cc
GEAR RATIO 1.861
PROPELLER Yamaha Reliance SDS

MANUFACTURED BY
Jeanneau
jeanneau.com/en-au/

SUPPLIED BY
Northside Marine
2294 Sandgate Road, Boondall QLD 4034
PH (07) 3265 8000
E info@nsmarine.com.au
W northsidemarine.com.au

Sea Trials



Wind was 0-15kt NE, and the sea was moderate bay chop 0.5-1m. Range calculated leaving 10 per cent fuel in reserve (280L tank).

RPM	KM	KNOTS	FUEL BURN L/H	ECONOMY NM/L	RANGE
1000	7.4	4.00	3.2	1.25	314.66
1500	12	6.48	5.4	1.20	302.38
2000	14.2	7.67	9.1	0.84	212.33
2500	16	8.64	13.3	0.65	163.69
3000	18	9.72	19.9	0.49	123.08
3500	22	11.88	25.6	0.46	116.93
4000	33	17.82	32.4	0.55	138.59
4500	46	24.84	39	0.64	160.49
5000	54	29.16	57	0.51	128.91
WOT 5300	60	32.40	69	0.47	118.32



CLOCKWISE FROM LEFT A ladder is convenient after a swim; A higher and wider hull; More than enough room for two



At the helm, the dash layout is stylish, and I do like the stepped design as the top section houses a large GPS/Sonar unit or twin smaller units, along with the Fusion head unit and Yamaha digital gauge. At the step there's a drink-holder, 12V plug, and the joystick controller for the bow-thruster. Aside from looking classy, the sharper angle to the black dash prevents glare off the screens. Finished off with a clip-in carpet, new upholstery colours, full curtains and teak trims, the saloon is inviting and a comfortable spot to relax in day or night.

Up front is the ever-necessary head for the

family, positioned in front and just below the helm on the port side. A small vanity and port window is included within the head, along with seated shower being an option available.

For the overnighters, the cabin comfortably sleeps two adults, has plenty of below bunk storage, side pocket storage, access to the separate bow-thruster battery, as well as being well-lit and ventilated through the top hatch.

Externally the bow has a split high rail with fold-down ladder for easy boarding and the windlass anchor is a definite box that also needs to be ticked.

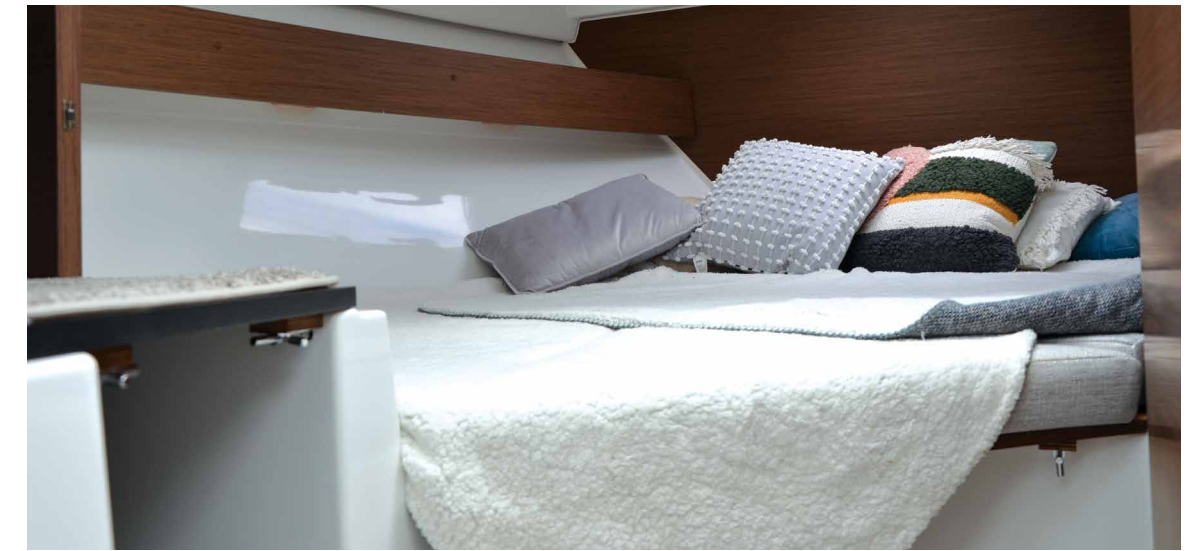
OUT ON THE WATER

In line with the norm, Northside Marine go the extra mile when it comes to boat tests and a full day out to the Tangalooma Wrecks in Moreton Bay was planned. The 33km run from Shorncliffe most certainly provides the ideal test run on any boat and particularly so when the foul bay winds come up in the afternoons.

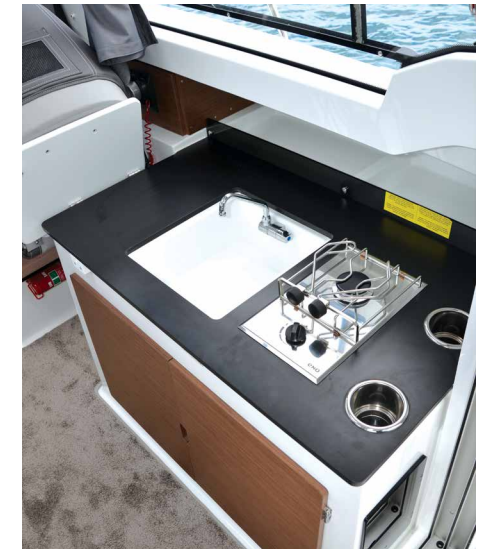
Stability at rest and underway is a standout on the 795 and that stems from the wider beam and limited deadrise. For cruising and overnights, it's a big positive, however, we come back to the typical compromise and it's in the ride. The shallow deadrise allows for a slower cruising styled drive, so if slamming away offshore at 30 knots speed in the rough is your thing, this is not for you. In saying that, the ride is not bad at all around the 17-20kt mark. Again, and these boats are not designed to be the ultimate speed machines and the lower cruise speeds between 15-20kt will provide better economy and range.



CLOCKWISE FROM RIGHT The bed can sleep two; The sink and gas stove are aft of the captain's seat; Built for adventuring to remote areas; It has a stylish dash layout



“Stability at rest and underway is a standout on the 795, and that stems from the wider beam and limited deadrise”



Interestingly, the owner opted for the Yamaha F200 four-cylinder four-stroke, which is a fantastic motor and pushes the 795 along at a max speed of 32 knots. The only niggle I have with this is that the smaller horsepower is working pretty hard at both cruise and top speeds.

The max horsepower rating is 250hp on the 795, and a Yamaha 225 or 250hp V6 4.2L would without a doubt be the way to go. You would have far better cruise speeds at lower revs, better economy, and less wear and tear on the motor.

Another bonus with the new Yamahas is the digital control options with plug and play compatibility to the latest Helm Master EX joystick and autopilot control. If you have the coin spare it's a worthwhile spend.

Chucking the 795 into turns, the hull banks slightly and it's an easy and comfortable hull to drive. The full, wide screen and large side glass provide 180-degree clear views at the helm, along with the stylish dash layout and control positioning adding to the captains cruising comfort on this boat. For those needing a bit of extra assistance when docking, the bow-thruster option makes life so much easier.

“If a stylish, easy to handle, and trailerable cruiser is on your radar, the new Merry Fisher 795 Series 2 is definitely worth a look”

THE WRAP

If a stylish, easy to handle and trailerable cruiser is on your radar and you don't want to spend a fortune, the new Merry Fisher 795 Series 2 is definitely worth a look. In my opinion it could just be the ideal family pleaser that doesn't break the bank. Sporting numerous creature comforts onboard, you have the ability to cruise in comfort, do the odd overnights and could even transform or trick it up into something a bit more fishing-oriented, and again, without spending a fortune. [x](#)



ABOVE Branding is subtle

SUBSCRIBE
to trade-a-boat and save!

tradeaboat THE BOATING BIBLE
RISING STAR
Maritimo's next legend is born

PLUS OVER 300 BOATS FOR SALE! ISSUE \$39

tradeaboat THE BOATING BIBLE
RISING STAR
Maritimo's next legend is born

PLUS OVER 300 BOATS FOR SALE! ISSUE \$39

visit www.tradeboats.com.au/subscribe